



# CAPITAL

Collection



## Fenchurch

*FR screen fabric with excellent solar reflection that doesn't sacrifice view through*

2400mm

# Fenchurch

Solar reflection without sacrificing view through

This high-performance polyester screen fabric combines the best of both worlds in terms of visual and thermal comfort.

Fenchurch reflects heat and filters natural daylight to prevent glare regardless of the chosen colour. Thanks to its metallised backing and unique weaving structure, it has an incredible *solar reflectance* of up to 83%.



Certified fire retardancy



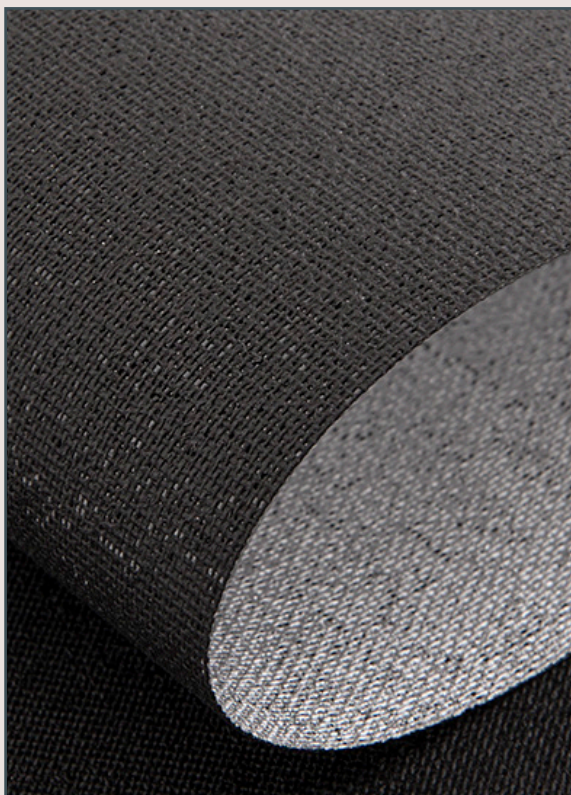
Choose from or combine two openness factors



Reflects solar heat, keeping spaces cool



Reduces glare and allows high quality view through



| 3%



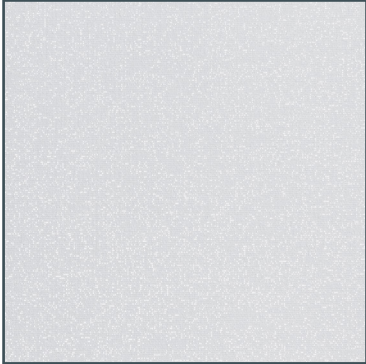
| 5%

	Fenchurch 3%	Fenchurch 5%
Product	Roller	Roller
Composition	100% PES	100% PES
Roller - roll width	2400mm	2400mm
Roller - roll length	ca. 42m	ca. 42m
Weight	220g/m <sup>2</sup>	220g/m <sup>2</sup>
Thickness	0.36mm	0.34mm
FR Classifications	BS 5867-2, TYPE B   DIN 4102, CLASS B1   NFPA 701	BS 5867-2, TYPE B   DIN 4102, CLASS B1   NFPA 701
Colour Fastness (ISO 105 - B02)	Grade 7	Grade 7
Cleaning	Damp cloth	Damp cloth
Recommended cut method	Cold Cut, Ultrasonic	Cold Cut, Ultrasonic
Oeko-Tex Standard 100	Yes	Yes
Suitable for moist conditions	No	No

Technical Specifications										
Colour	Thermal							Visual		
	Ts %	RS %	As %	GTOT INT GLAZING C		GTOT INT GLAZING D		Tv %	Rv %	Av %
				GTOT	CLASS	GTOT	CLASS			
<b>Fenchurch 3%</b>										
White	4	81	15	0.3	2	0.24	2	4	80	16
Ecru	3	81	16	0.3	2	0.24	2	2	80	18
Taupe	2	82	16	0.3	2	0.23	2	2	81	17
Mist	5	76	19	0.32	2	0.24	2	6	75	19
Slate	2	79	19	0.31	2	0.24	2	2	78	20
Charcoal	2	82	17	0.3	2	0.23	2	1	81	18
Black	2	80	18	0.31	2	0.24	2	3	79	18
<b>Fenchurch 5%</b>										
White	6	83	11	0.3	2	0.23	2	7	82	11
Ecru	6	83	11	0.3	2	0.23	2	6	82	12
Taupe	6	83	11	0.3	2	0.23	2	6	82	12
Mist	6	82	12	0.3	2	0.23	2	6	81	13
Slate	6	82	12	0.3	2	0.23	2	6	81	13
Charcoal	5	83	12	0.3	2	0.23	2	5	83	12
Black	5	82	13	0.3	2	0.23	2	5	81	14

<b>Ts</b> = Solar Transmittance	<b>Rs</b> = Solar Reflectance	<b>As</b> = Solar Absorbance	<b>Tv</b> = Visual Transmittance	<b>Rv</b> = Visual Reflectance	<b>Av</b> = Visual Absorbance
<b>Gtot</b> = Total solar energy reflectance		<b>Glazing C</b> = Double glazing as described in EN 14501:2021		<b>Glazing D</b> = Solar control glazing as described in EN 14501:2021	

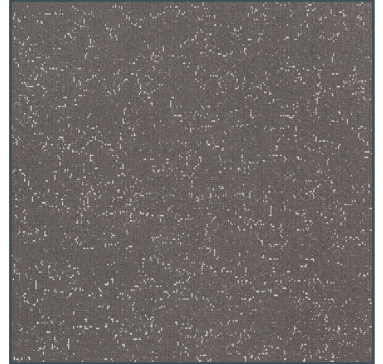




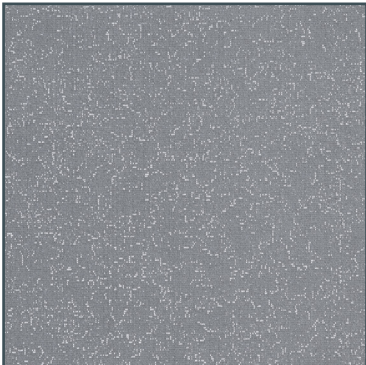
White 3%



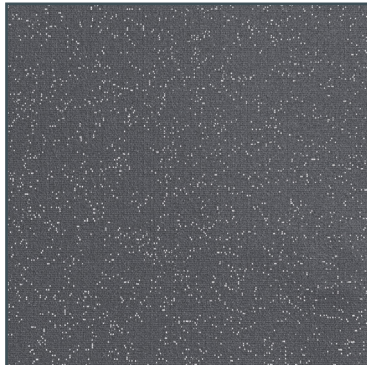
Ecru 3%



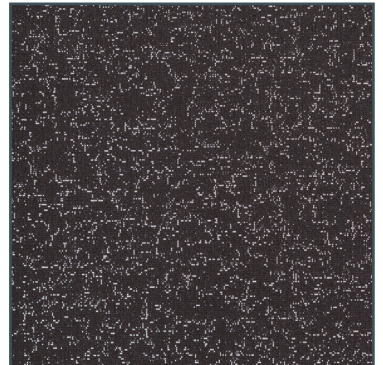
Taupe 3%



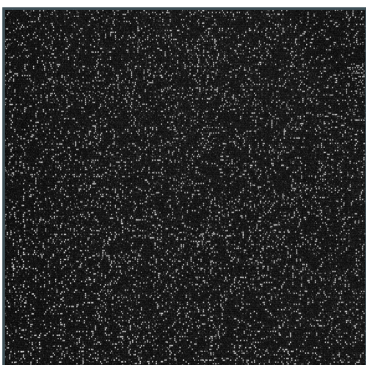
Mist 3%



Slate 3%



Charcoal 3%



Black 3%